

- Fast Switching Speeds
- Low Crosstalk Between Switches
- High On/Off Output Voltage Ratio
- Analog Supply Voltage Range (VCC-VEE) . . . 3 V to 12 V
- Digital Supply Voltage Range (VCC-GND) . . . 2 V to 6 V
- Package Options Include Both Plastic and Ceramic Chip Carriers in Addition to Plastic and Ceramic DIPs
- Dependable Texas Instruments Quality and Reliability

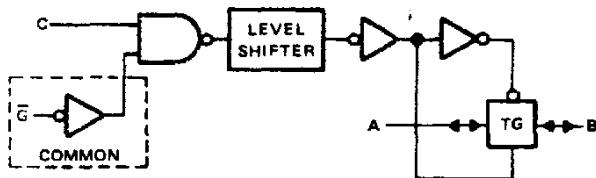
**description**

The 'HC4316 is a quadruple bilateral switch. The switches can transmit analog or digital signals in either direction. The 'HC4316 offers high control input impedance and low crosstalk between switches.

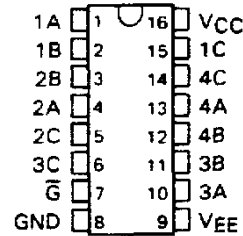
Applications include digital switching and multiplexing analog-to-digital and digital-to-analog conversion; digital control of frequency, impedance, phase and analog-signal gain; and use as a squelch control, chopper, modulator, demodulator, or commutating switch.

The SN54HC4316 is characterized for operation over the full military temperature range of -55°C to 125°C. The SN74HC4316 is characterized for operation from -40°C to 85°C.

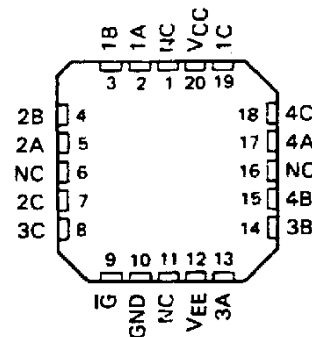
**logic diagram, each switch (positive logic)**



SN54HC4316 . . . J PACKAGE  
SN74HC4316 . . . J OR N PACKAGE  
(TOP VIEW)

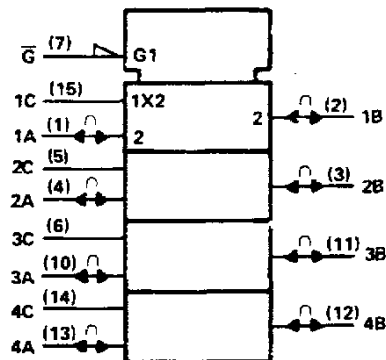


SN54HC4316 . . . FH OR FK PACKAGE  
SN74HC4316 . . . FH OR FN PACKAGE  
(TOP VIEW)



NC—No internal connection

**logic symbol**



Pin numbers shown are for J and N packages.

**PRODUCT PREVIEW**

This document contains information on a product under development. Texas Instruments reserves the right to change or discontinue this product without notice.



POST OFFICE BOX 225012 • DALLAS, TEXAS 75265

Copyright © 1984, Texas Instruments Incorporated

## **IMPORTANT NOTICE**

Texas Instruments (TI) reserves the right to make changes to its products or to discontinue any semiconductor product or service without notice, and advises its customers to obtain the latest version of relevant information to verify, before placing orders, that the information being relied on is current.

TI warrants performance of its semiconductor products and related software to the specifications applicable at the time of sale in accordance with TI's standard warranty. Testing and other quality control techniques are utilized to the extent TI deems necessary to support this warranty. Specific testing of all parameters of each device is not necessarily performed, except those mandated by government requirements.

Certain applications using semiconductor products may involve potential risks of death, personal injury, or severe property or environmental damage ("Critical Applications").

**TI SEMICONDUCTOR PRODUCTS ARE NOT DESIGNED, INTENDED, AUTHORIZED, OR WARRANTED TO BE SUITABLE FOR USE IN LIFE-SUPPORT APPLICATIONS, DEVICES OR SYSTEMS OR OTHER CRITICAL APPLICATIONS.**

Inclusion of TI products in such applications is understood to be fully at the risk of the customer. Use of TI products in such applications requires the written approval of an appropriate TI officer. Questions concerning potential risk applications should be directed to TI through a local SC sales office.

In order to minimize risks associated with the customer's applications, adequate design and operating safeguards should be provided by the customer to minimize inherent or procedural hazards.

TI assumes no liability for applications assistance, customer product design, software performance, or infringement of patents or services described herein. Nor does TI warrant or represent that any license, either express or implied, is granted under any patent right, copyright, mask work right, or other intellectual property right of TI covering or relating to any combination, machine, or process in which such semiconductor products or services might be or are used.